

THERMOPLASTIC CONVEYOR AND PROCESS BELTS



THERMOPLASTIC CONVEYOR AND PROCESS BELTS

MATERIAL	N. FABRIC	PRODUCT NAME	FOOD COMPLIANCE	ANTISTATIC	UPPER SIDE				LOWER SIDE				TOTAL THICKNESS mm	FORCE FOR ELONGATION 1% N/mm	MAXIMUM TRANSMISSIBLE FORCE N/mm	TIPO TRAMA "R" RIGIDA "F" FLESSIBILE	Ø MIN ROLLER mm		OPERATING TEMPERATURE °C		MAXIMUM PRODUCTION WIDTH	WEIGHTKG/MQ
					COLOR	FINISH	HARDNESS SHORE	THICKNESS mm	COLOR	FINISH	HARDNESS SHORE	THICKNESS mm					FLECTION	COUNTER FLECTION	MINIMUM	MAXIMUM		
PVC	1	1V 11-VRP					74 A	0,50					1,10	5	6	R	10	15	-5	80	2000	1,20
		1VNS 20-BN-R2	V				65 A	0,60		R2	85 A	0,80	2,00	8	12	F	35	50	-15	100	3000	1,90
	2	2V 25-NR-IO-WX		V		IO	55 A	1,00					2,50	8	10	R	30	30	-10	90	2000	2,30
		2V 20-VRP					74 A	0,50					2,00	8	10	R	30	50	-10	80	3000	2,30
		2VNS 20-BN	V				65 A	0,50					2,00	8	15	R	30	50	-10	100	3000	2,10
		2VNS 20-BU	V				65 A	0,50					2,00	8	15	R	30	50	-10	100	3000	2,10
		2VNS 26-BN	V				65 A	0,70					2,60	12	18	R	50	60	-10	100	3000	3,00
		2VNS 26-BU	V				65A	0,70					2,60	12	18	R	50	60	-10	100	3000	3,00
		2V 21-VRP-IT		V		IT	74 A	0,50					2,10	8	10	R	30	50	-5	80	3000	2,40
		2V 23-VRP-V				V	74 A	0,50					2,30	8	10	R	40	60	-5	80	3000	2,50
		2V 23-VRP-BW				BW	55 A	0,80					2,30	12	20	R	60	90	0	60	1950	2,50
		2V 24-BN-LG	V			LG	55 A	0,80					2,40	8	10	R	40	60	0	70	2000	2,40
		2V 26-GG-LR				LR	46 A	1,00					2,60	8	10	R	40	60	-5	60	2000	2,50
		2V 26-VRM		V			80 A	0,70					2,40	10	18	R	40	60	-15	80	3000	2,70
		2V 26-NR		V			68 A	0,80					2,60	13	20	R	50	60	-10	80	3000	3,00
		2V 30-NR LR		V		LR	68 A	1,30					3,00	13	20	R	50	60	-10	80	3000	3,00
		2V 32-BU-R2	V				72 A	0,50		R2	80 A	0,80	3,20	16	20	F	60	60	-5	80	2000	3,50
		2V 32-VRM-R2					80 A	0,70		R2	85 A	0,80	3,20	12	20	F	50	80	-15	80	3000	3,20
		2V 32 BN-R2	V				72 A	0,50		R2	80 A	0,80	3,20	16	20	F	60	60	-5	80	2000	3,50
		2VNS 48-BU-ST	V			ST	35 A	3,00					4,80	10	18	R	60	120	-10	100	1500	4,80
		2V 52-VRP-ND				ND	46 A	3,70					5,20	8	10	R	40	60	-5	60	3000	4,50
		2V 54-BN-ND	V			ND	46 A	3,50					5,20	8	10	R	50	60	0	80	3000	4,60



THERMOPLASTIC CONVEYOR AND PROCESS BELTS

MATERIAL	N. FABRIC	PRODUCT NAME	FOOD COMPLIANCE	ANTISTATIC	UPPER SIDE				LOWER SIDE				TOTAL THICKNESS mm	FORCE FOR ELONGATION 1% N/mm	MAXIMUM TRANSMISSIBLE FORCE N/mm	TIPO TRAMA "R" RIGIDA "F" FLESSIBILE	Ø MIN ROLLER mm		OPERATING TEMPERATURE °C		MAXIMUM PRODUCTION WIDTH	WEIGHTKG/MQ
					COLOR	FINISH	HARDNESS SHORE	THICKNESS mm	COLOR	FINISH	HARDNESS SHORE	THICKNESS mm					FLECTION	COUNTER FLECTION	MINIMUM	MAXIMUM		
PVC	2	2V 55-BU-BL	V			BL	55 A	3,60					5,50	12	20	R	50	60	-5	70	2000	3,80
		2V 57-NR-ND		V		ND	46 A	3,70					5,70	13	20	R	50	60	-10	80	3000	4,70
		2V 85-VRP-H				H	46 A	6,50					8,50	12	20	R	60	120	-10	60	3000	5,90
	3	3V 38-BN	V				72 A	0,80					3,80	20	30	F	120	140	-5	80	3000	4,60
		3V 38-VRP					74 A	1,00					3,80	24	30	R	120	140	-10	80	3000	4,60
		3V 41-VRM-R2					74 A	0,50		R2	74 A	1,00	4,10	18	30	R	120	180	-15	80	2000	4,80
		3V 46-VRM-R2	V				65 A	0,70		R2	75 A	0,80	4,60	18	30	R	100	140	-10	90	3000	5,00
		3V 50-VRP-V					74 A	2,00					5,00	18	30	F	150	200	-10	80	3000	6,00
PU	1	1PO 075-BU-M	V	V			86 A	0,30					0,80	5	8	R	5	15	-30	80	3000	0,80
		1PO 075-BN-M-NA	V				86 A	0,30					0,80	5	8	R	5	15	-30	80	3000	0,80
		1PO 075-BN-M	V	V			86 A	0,20					0,75	5	8	R	5	15	-30	80	3000	0,80
		1PO 10-BN-FR	V	V		FR	86 A	0,40					1,00	6	10	R	8	15	-30	80	2000	1,10
		1PO 10-BU-FR	V	V		FR	86 A	0,40					1,00	6	10	R	8	15	-30	80	2000	1,10
		1PO 12-MR-RF	V	V		RF	86 A	0,40					1,20	5	8	R	6	15	-30	100	4000	1,10
		1PO 13-BN	V	V			86 A	0,50					1,30	8	15	R	10	30	-30	80	3200	1,30
	2	2PO 13-BN-M-NA	V	-			86 A	0,20					1,30	6	10	R	6	12	-20	80	3200	1,30
		2PO 13-VRM-M	V	V			92 A	0,30					1,30	8	15	R	20	30	-30	80	3000	1,40
		2PO 14-BN-M	V	V			92 A	0,30					1,40	6	10	R	10	20	-30	80	3200	1,40
2PO 14-BU-M		V	V			86 A	0,20					1,40	6	10	R	6	12	-20	80	3200	1,30	
2PO 13-BN-FR		V	V		FR	92 A	0,30					1,30	6	10	R	10	20	-30	80	3000	1,40	
		2PO 17-BU-FR	V	V		FR	92 A	0,30				1,30	6	10	R	20	30	-30	80	3000	1,40	



THERMOPLASTIC CONVEYOR AND PROCESS BELTS

MATERIAL	N. FABRIC	PRODUCT NAME	FOOD COMPLIANCE	ANTISTATIC	UPPER SIDE				LOWER SIDE				TOTAL THICKNESS mm	FORCE FOR ELONGATION 1% N/mm	MAXIMUM TRANSMISSIBLE FORCE N/mm	TIPO TRAMA "R" RIGIDA "F" FLESSIBILE	Ø MIN ROLLER mm		OPERATING TEMPERATURE °C		MAXIMUM PRODUCTION WIDTH	WEIGHTKG/MQ
					COLOR	FINISH	HARDNESS SHORE	THICKNESS mm	COLOR	FINISH	HARDNESS SHORE	THICKNESS mm					FLECTION	COUNTER FLECTION	MINIMUM	MAXIMUM		
PU	2	2PO 16-BN-M	V	V			92 A	0,4					1,60	8,0	12,0	R	40	70	-30	80	3000	1,80
		2PO 16-BU-M	V	V			92 A	0,4					1,60	8,0	12,0	R	40	70	-30	80	3000	1,80
		2PO 16-VR-M	V	V			92 A	0,40					1,60	8,0	12,0	R	40	70	-30	80	3000	1,80
		2PO 24-BN	V	V			92 A	0,60					2,40	13,0	20,0	R	80	100	-30	80	3000	2,40
		2PO 24-BU	V	V			92 A	0,60					2,40	13,0	20,0	R	80	100	-30	80	3000	2,40
		2PO 26-NR					92 A	0,60					2,60	11,0	20,0	R	80	130	-30	80	3000	2,90
	0	EB 085-BU	V				86 A				RV	86 A	1,00	2,2	2,2		10	10	-20	60	1500	1,10
SI	2	2SL 10-BN	V				30 A	0,20				1,00	6,0	12,0	R	10	20	-30	80	2000	1,10	
		2SL 14-BN	V	V			30 A	0,20				1,45	8,0	12,0	R	6	40	-20	100	2000	1,50	
PE	1	1PE 12-TR	V		TR		92 A	0,30	TR			1,20	4,0	8,0	F	20	20	-20	60	3000	1,20	
	2	2PE 24-TR	V	V	TR		92 A	0,60				2,40	16,0	24,0	F	80	100	-20	60	3000	2,30	
	3	3PE 38-TR	V	V	TR		92 A	0,75				3,80	20,0	30,0	F	120	150	-20	60	3000	3,40	
GM	0	EB 14-VRM-RV		V								1,40	1,0	1,0		15	15	-30	60	1200	1,40	
	2	2GM 23-VRM-ITG		V		ITG	45 A	1,00				2,30	9,0	15,0	R	40	40	-20	100	1500	1,50	
		2GM 25-VRM-LR		V		LR	45 A	1,30				2,50	13,0	20,0	R	50	60	-30	100	1200	2,50	
		2GM 68-VRM-ND		V		ND	45 A	3,50				6,80	12,0	25,0	F	50	100	-20	100	1200	5,60	

FORCE FOR ELONGATION 8%



THERMOPLASTIC CONVEYOR AND PROCESS BELTS

MATERIAL	N. FABRIC	PRODUCT NAME	FOOD COMPLIANCE	ANTISTATIC	UPPER SIDE				LOWER SIDE				TOTAL THICKNESS mm	FORCE FOR ELONGATION 1% N/mm	MAXIMUM TRANSMISSIBLE FORCE N/mm	TIPO TRAMA "R" RIGIDA "F" FLESSIBILE	Ø MIN ROLLER mm		OPERATING TEMPERATURE °C		MAXIMUM PRODUCTION WIDTH	WEIGHTKG/MQ
					COLOR	FINISH	HARDNESS SHORE	THICKNESS mm	COLOR	FINISH	HARDNESS SHORE	THICKNESS mm					FLECTION	COUNTER FLECTION	MINIMUM	MAXIMUM		
FABRIC	1	1FB 055-BN	V	V									0,55	3,5	12	R	8	10	-40	60	2000	0,30
	2	2FB 09-BN	V	V									0,90	5	8	R	6	6	-20	80	3200	0,90
		2FB 14-NR		V									1,40	10	16	R	30	30	-15	90	2000	1,40
		2FB 17-BN	V										1,70	10	18	R	25	25	-10	90	3000	1,70
		2FB 23-VRP											2,30	16	20	F	30	30	-10	90	3000	2,30
		2FB 28-BN	V										2,80	5	15	F	40	40	-10	90	3000	2,40
		2PK 29-NR		V				1,20					2,90	8	15	R	80	100	-10	100	2000	2,80
		2FT 32-BN	V					1,80					3,20	7	10	R	30	45	-10	90	2000	2,40
	3	3FB 35-VRP											3,50	18	30	F	80	80	-10	100	3000	4,00
		3FB 35-BN	V										3,50	18	30	R	120	120	-10	90	2000	3,60

MATERIAL

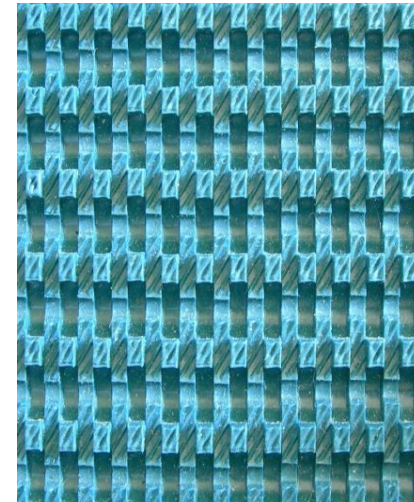
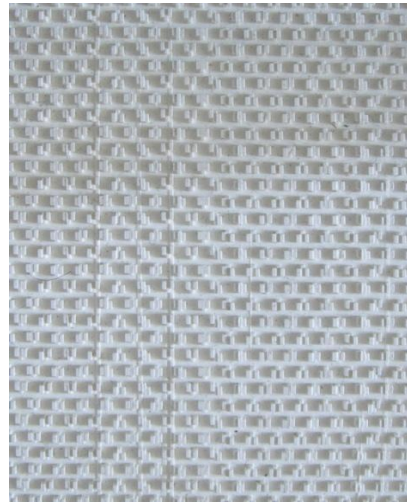
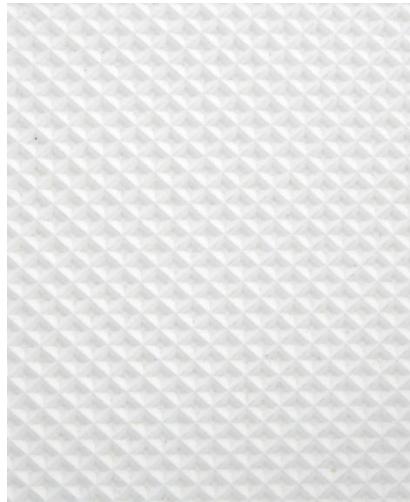
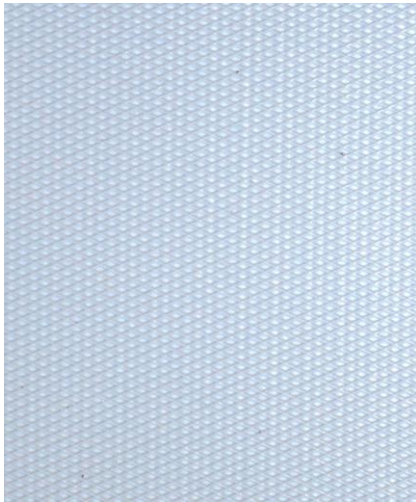
PVC	POLYCLORIDE OF VINYL
PU	POLYURETHANE
SI	SILICONE
PE	POLYETHYLENE
GM	BUTADYLENE ACRYLONITRILE (NBR)

POSSIBLE COLORS

	WHITE		BLACK		PETROL GREEN		YELLOW
	TRANSPARENT		LIGHT GREEN		BLUE		OCRA YELLOW
	LIGHT GREY		APPLE GREEN		BLUE COBALT		BROWN
	GREY		DARK GREEN		BEIGE		ORANGE



STRUCTURES



FR

Transport of sticky products from the bakery, confectionery and chocolate industries

R

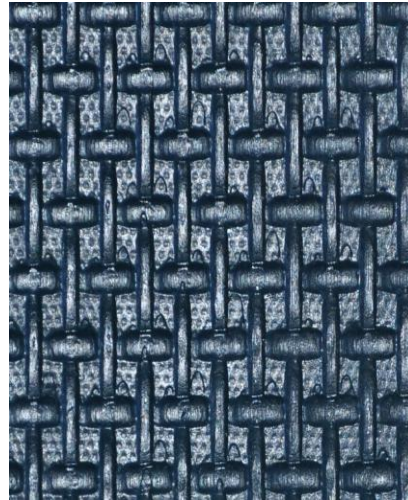
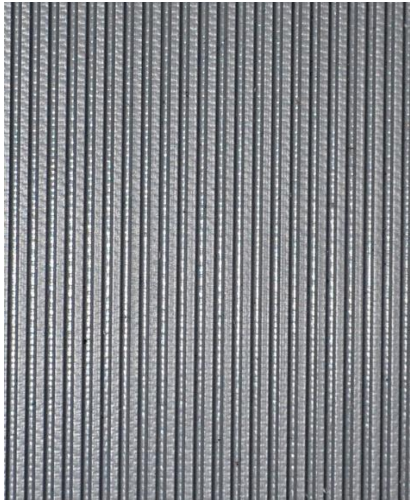
Transport of sticky products from the bakery, confectionery and chocolate industries

N

Inclined transport and roller coating material.

ND

High grip surface. inclined transport for medium-heavy products



LR

LG

BW

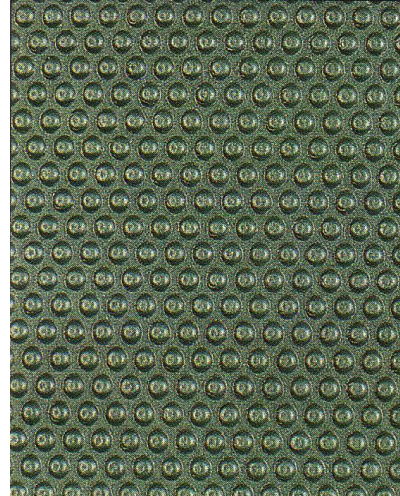
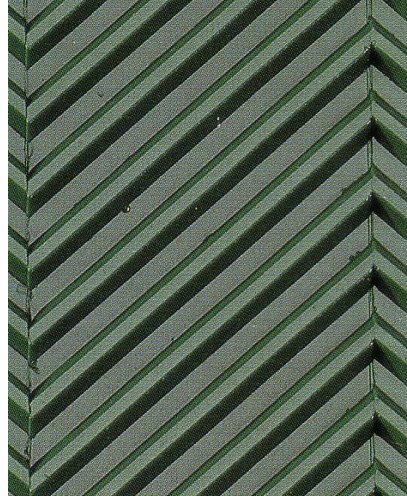
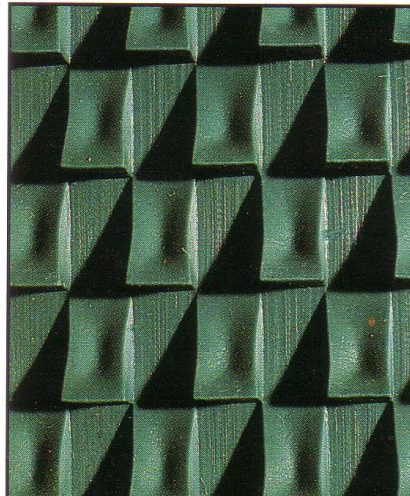
WG

High grip surface also inclined transport in presence of dust, humidity of frozen products

High grip surface also inclined transport in presence of dust, humidity of frozen products

High grip surface inclined transport.

Increased contact surface with high grip. Inclined transport



H

FBC

V

IO

High friction surface inclined transport.

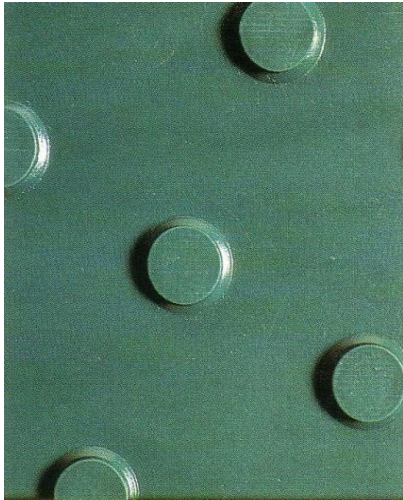
Medium grip surface in the presence of liquids or powders. transport of bulk products e seafood products

Medium grip surface inclined transport processing machines of wood and marble

Medium grip surface for treadmill machines

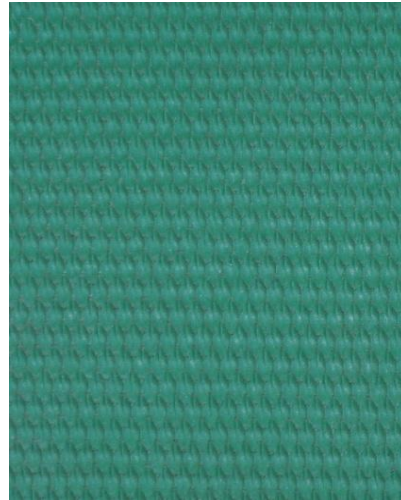


STRUCTURES



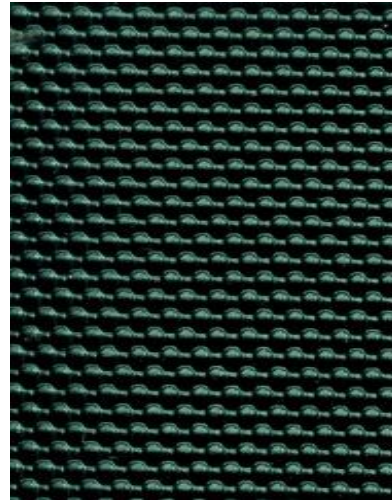
BL

Surface unsuitable for tobacco transport and cutting machines.



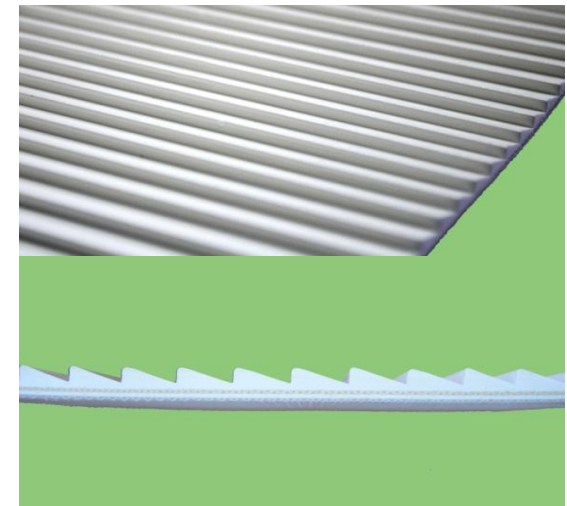
ITG

Medium friction surface.
Inclined transport



IT

Medium grip surface
inclined transport
processing machines of
wood and marble

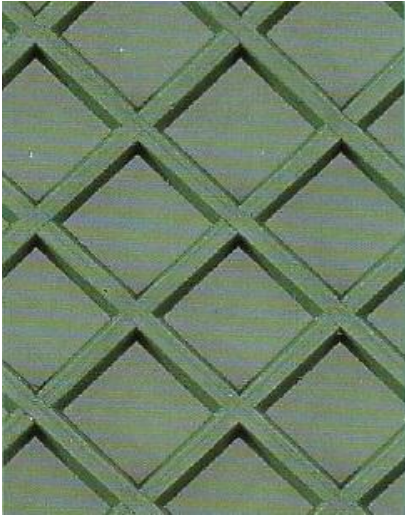


ST

High grip surface inclined
transport. Transport of frozen
products.

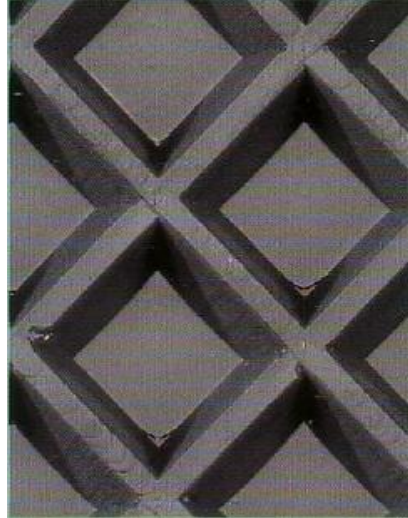


STRUCTURES



SQ12

inclined transport
machines for wood
production sanding
systems



SQ20

inclined transport
machines for wood
production sanding
systems



RF

dead-adhesive profile for
chocolate production
sticky products cooling
tunnel

